

BioLite N2

Outdoor IP Fingerprint Terminal



BioLite N2 is a Suprema's 2nd generation outdoor fingerprint terminal that provides comprehensive access control and time attendance features based on Suprema's latest biometric technology and security platform. BioLite N2 provides class-leading performance and security by featuring Suprema's latest fingerprint algorithm coupled with world's best fingerprint sensor. Packed in a rugged IP67 housing, BioLite N2 added flexibility in system design with multi-class RFID reading technology.

BioLite N2

Outdoor IP Fingerprint Terminal

Features



Best-in-class Performance

- Latest Suprema fingerprint algorithm
- Powerful 1.2 GHz CPU



Multi RFID Card Reading

- LF(125kHz), HF(13.56MHz) dual band
- Reads all card types including Mobile Card (NFC and BLE)



Advanced Accuracy & Security

- High-precision OP6 optical sensor



IP67 Certified Dust & Water Protection

- Ideal for harsh environment and outdoor installation



Full Time Attendance Features

- Color LCD with Keypad for time attendance functionality



FBI PIV(FAP 10) certified (BLN2-PAB Sensor only)

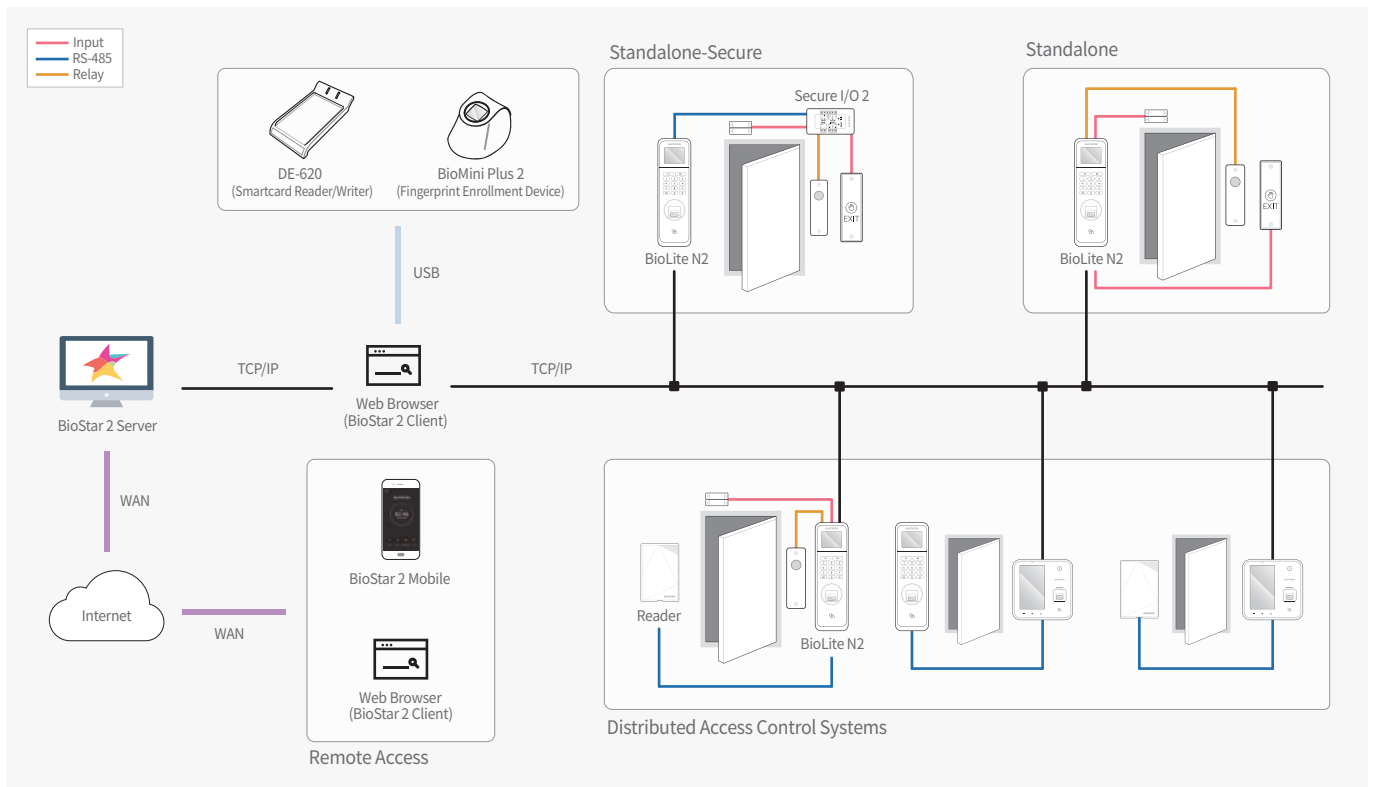
- OEM SFU-550 (SFU-P2) & fingerprint sensing module OPV single finger livescan capture device without membrane at 500ppi (PIV-071006 and Mobile ID FAP 10)

Specifications

Model Name	BLN2-ODB	BLN2-OAB, BLN2-PAB
RF Option	125kHz EM & 13.56MHz MIFARE, MIFARE Plus, DESFire/EV1, FeliCa, NFC & 2.4GHz BLE	125kHz EM, HID Prox & 13.56MHz MIFARE, MIFARE Plus, DESFire/EV1, FeliCa, iCLASS SE/SR/Seos
Biometric	Fingerprint	
Sensor Type	Optical Sensor (OP6)	
Template	SUPREMA / ISO 19794-2 / ANSI 378	
Extractor / Matcher	MINEX certified and compliant	
CPU	1.2 GHz	
Memory	4GB Flash + 64MB RAM	
Max. User	10,000	
Max. Template	20,000*	
Max. Logs	1,000,000	
LCD	1.77" color LCD	
Sound	16-bit Hi-Fi	
Ethernet	10/100 Mbps, auto MDI/MDI-X	
RS-485	1ch Host or Slave (Selectable)	
Wiegand	1ch Input or Output (Selectable)	
TTL	2ch Input	
Relay	1 Relay	
Ingress Protection	IP67	
Tamper	Supported	
Power	DC 12V	
Operating Temperature	-20°C ~ 50°C, (BLN2-PAB: -10°C ~ 50°C)	
Operating Humidity	0% ~ 80%, non-condensing	
Dimensions (WxHxD,mm)	58 x 190 x 44	
Certificates	CE, FCC, KC, RoHS, REACH, WEEE, FBI PIV(BLN2-PAB Sensor only)	

*Two templates per finger

System Configurations



Suprema Inc.

17F Parkview Tower, 248, Jeongjail-ro, Bundang-gu, Seongnam-si, Gyeonggi-do, 13554, Rep. of KOREA
 T +82 31 783 4502 F +82 31 783 4503 E sales_sys@supremainc.com www.supremainc.com

©2019 Suprema Inc. Suprema and identifying product names and numbers herein are registered trademarks of Suprema, Inc. All non-Suprema brands and product names are trademarks or registered trademarks of their respective companies. Product appearance, build status and/or specifications are subject to change without notice. [SUPREMA-AHL-BLN2-EN-REV09]